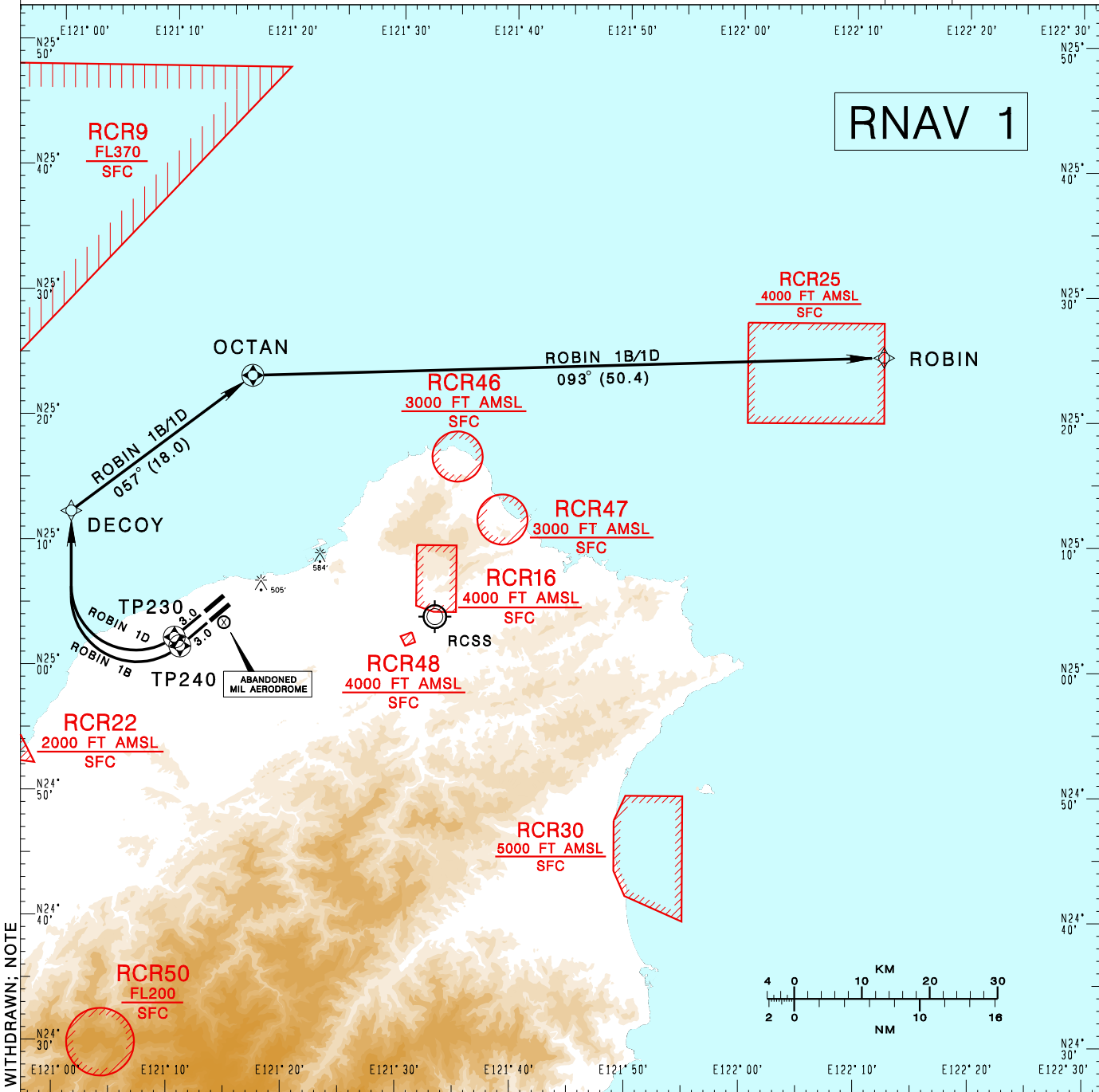


**臺灣桃園國際機場**  
TAIPEI/TAIWAN TAOYUAN INTL AD

RCTP SID  
ROBIN 1B RNAV(RWY 23L)  
ROBIN 1D RNAV(RWY 23R)

TAIPEI APP 125.1 128.5	TAIPEI TWR 118.7 129.3	ATIS 127.6		
Apt Elev: 108'		Trans Level: FL130		Trans Alt: 11,000'
BEARINGS ARE MAGNETIC; DISTANCES ARE NAUTICAL MILES; ELEVATIONS, HEIGHTS IN FEET				

**RNAV 1**



CHANGES: RCR49 COMPLETELY WITHDRAWN: NOTE

**ROBIN ONE BRAVO RNAV DEPARTURE**  
Climb on RWY HDG until leaving 600ft, then direct to TP240, DECOY, OCTAN, then to ROBIN.

**ROBIN ONE DELTA RNAV DEPARTURE**  
Climb on RWY HDG until leaving 600ft, then direct to TP230, DECOY, OCTAN, then to ROBIN.

- NOTE**
1. RWY 23R/23L speed restriction of 210KT IAS maximum until established on track to DECOY.
  2. Minimum climb gradients required: RWY 23L 3.4%(210 ft/NM) until TP240.
  3. ATS surveillance required.